



2019 ROAD
WORLD CHAMPIONSHIPS



YORKSHIRE
GREAT BRITAIN

2019 UCI ROAD WORLD CHAMPIONSHIPS



CLOSURE SUMMARY

On the Harrogate circuit, Paralympic and Time Trial routes we are implementing a “traffic light system” to classify the status of the road closures. This differs from previous cycling competitions where rolling road closures are possible, however due to the types of racing on the circuit and the nature of the course, this method is essential to maintain public and rider safety.

It should be noted that the closure times may vary on the day due to crowd levels, speed of the races and other impacts. Keep up to date with the racing by downloading our app and following Yorkshire 2019 on social media [@yorkshire2019](#) [@y2019travel](#)

KEY				
GREEN	AMBER	RED	AMBER	GREEN
Roads open as usual, route parking restrictions still apply, but free movement of traffic. Up to 2 Hours Before racing	Race circuit closed but pedestrian & Vehicle crossing points open. 2hrs to 30mins before racing	Full circuit lock down. Emergency vehicle and pedestrian crossing points only. From 30 mins before racing until last race vehicle has passed.	Race circuit closed but pedestrian & Vehicle crossing points open. Up to 1 hour after the last race vehicle.	Roads open as usual, route parking restrictions still apply, but free movement of traffic. Up to 1 hour after the last race vehicle.

i

INFO

DAY 4
ROUTE
TUESDAY 24 SEPTEMBER

AMBER PHASE – Road closures with crossing points for vehicles

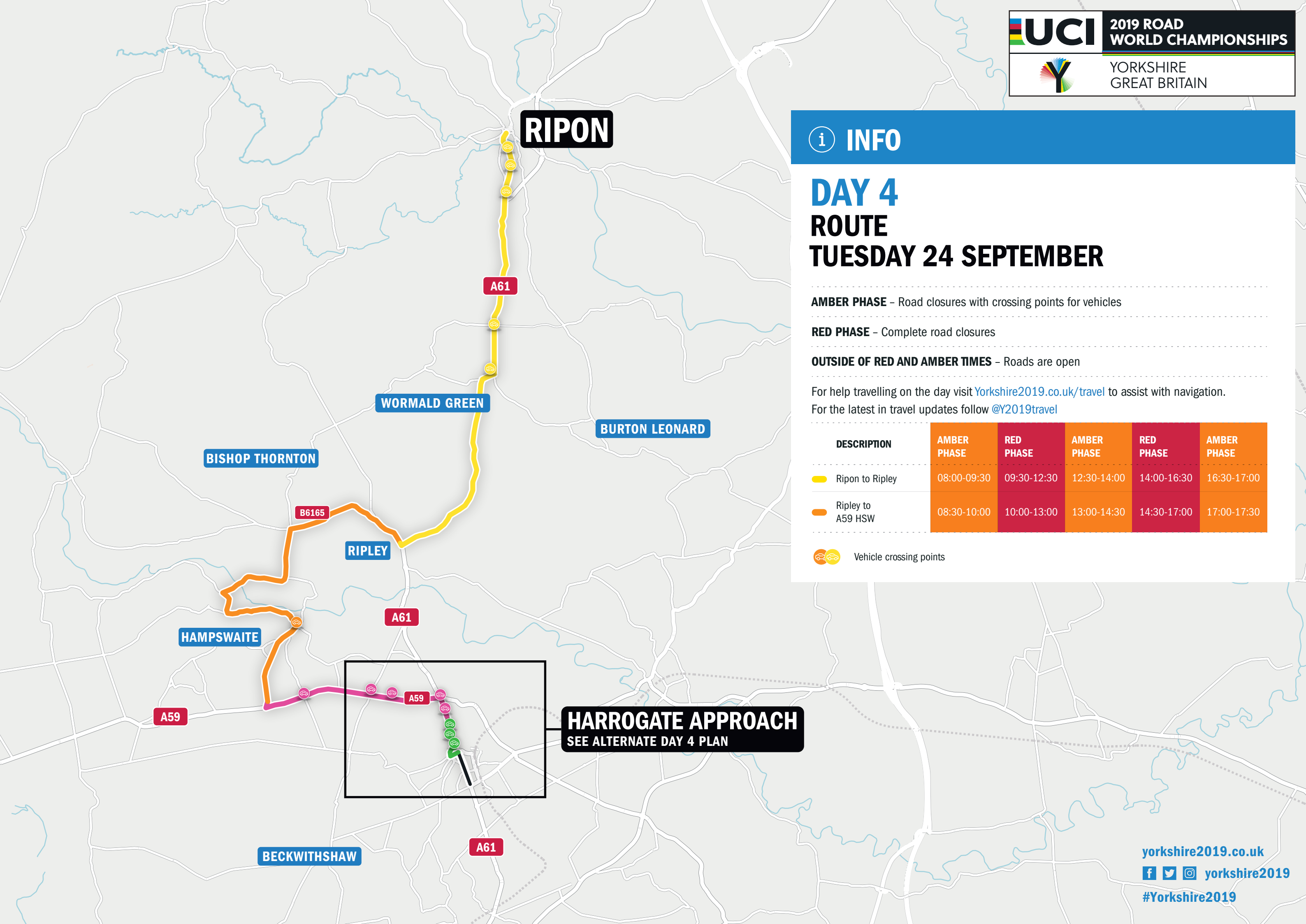
RED PHASE – Complete road closures

OUTSIDE OF RED AND AMBER TIMES – Roads are open

For help travelling on the day visit [Yorkshire2019.co.uk/travel](https://yorkshire2019.co.uk/travel) to assist with navigation.
For the latest in travel updates follow [@Y2019travel](https://twitter.com/Y2019travel)

DESCRIPTION	AMBER PHASE	RED PHASE	AMBER PHASE	RED PHASE	AMBER PHASE
Ripon to Ripley	08:00-09:30	09:30-12:30	12:30-14:00	14:00-16:30	16:30-17:00
Ripley to A59 HSW	08:30-10:00	10:00-13:00	13:00-14:30	14:30-17:00	17:00-17:30

 Vehicle crossing points



i

INFO

DAY 4

HARROGATE AREA

TUESDAY 24 SEPTEMBER

AMBER PHASE

– Road closures with crossing points for vehicles

RED PHASE





– Complete road closures

OUTSIDE OF RED AND AMBER TIMES

– Roads are open

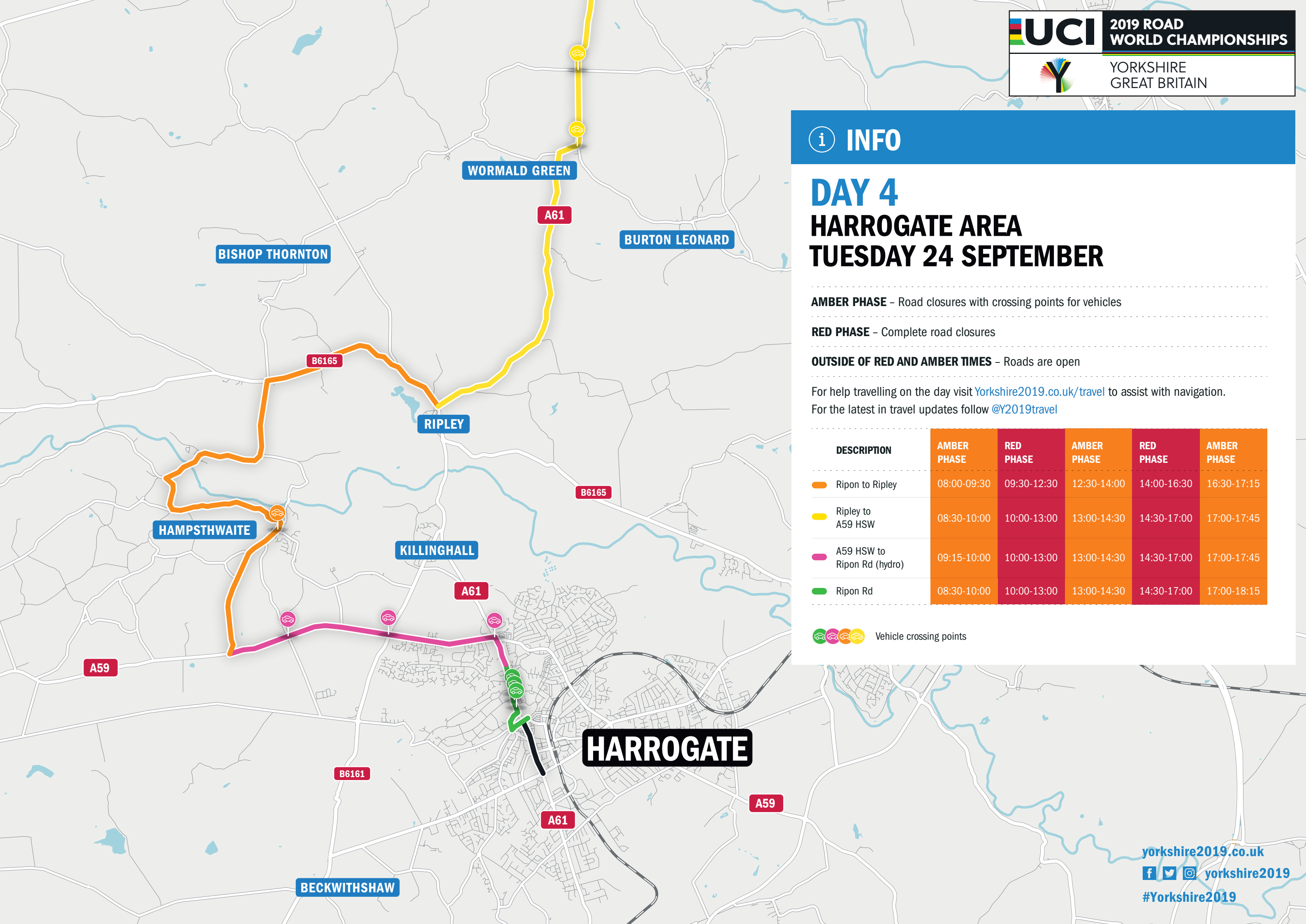
For help travelling on the day visit [Yorkshire2019.co.uk/travel](https://yorkshire2019.co.uk/travel) to assist with navigation.

For the latest in travel updates follow [@Y2019travel](https://twitter.com/Y2019travel)

DESCRIPTION	AMBER PHASE	RED PHASE	AMBER PHASE	RED PHASE	AMBER PHASE
 Ripon to Ripley	08:00-09:30	09:30-12:30	12:30-14:00	14:00-16:30	16:30-17:15
 Ripley to A59 HSW	08:30-10:00	10:00-13:00	13:00-14:30	14:30-17:00	17:00-17:45
 A59 HSW to Ripon Rd (hydro)	09:15-10:00	10:00-13:00	13:00-14:30	14:30-17:00	17:00-17:45
 Ripon Rd	08:30-10:00	10:00-13:00	13:00-14:30	14:30-17:00	17:00-18:15



Vehicle crossing points



HARROGATE TOWN CENTRE CLOSURES & TRAFFIC MGMT

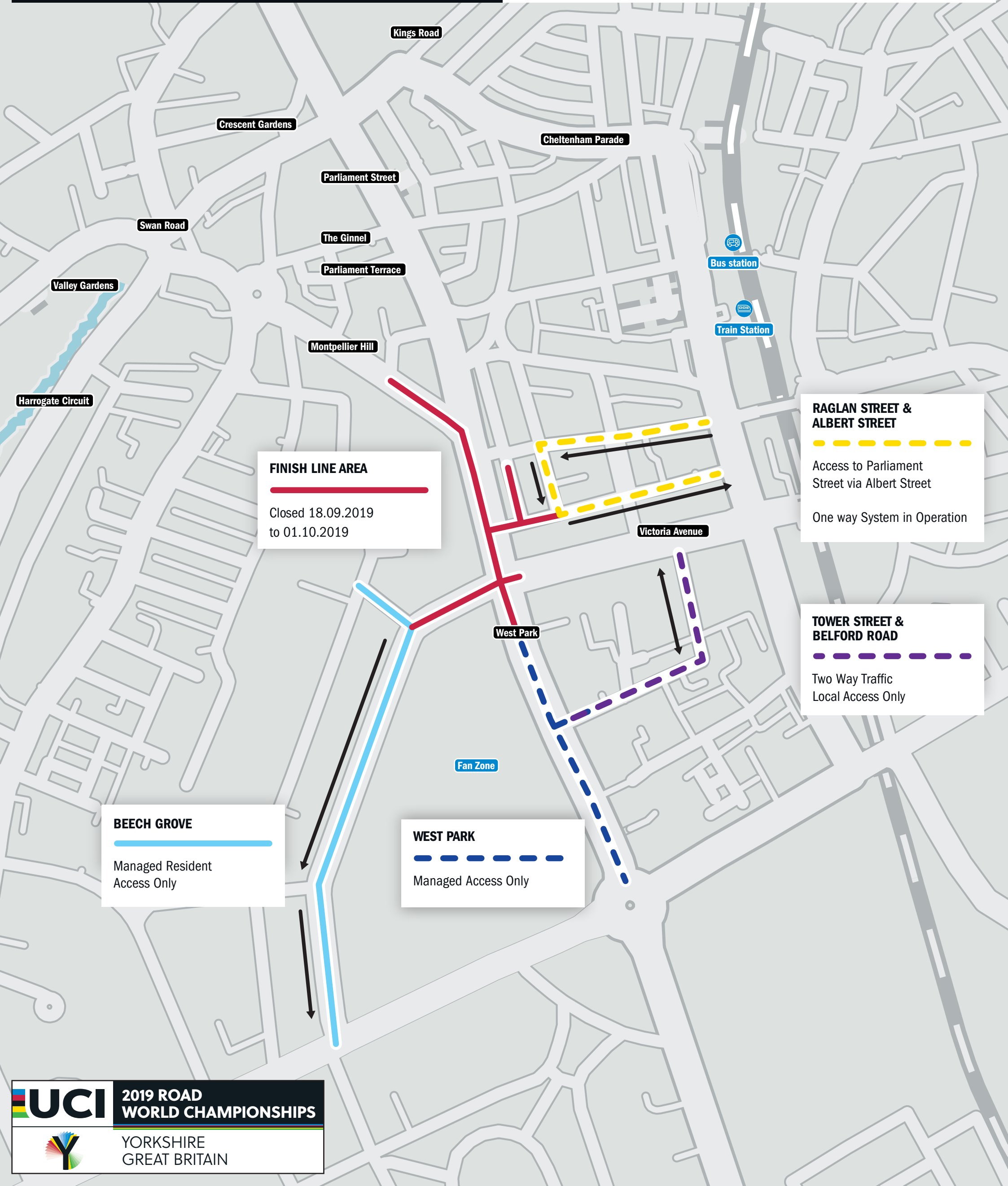
1830 MONDAY 23 TO 0700
TUESDAY 24 SEPTEMBER 2019

KEY

2 way traffic 18 September to 1 October
1 way traffic 18 September to 1 October



Timings Subject to change dependent on race speed / crowd levels and traffic levels.
For more information go to yorkshire2019.co.uk or follow our dedicated travel twitter [@Y2019travel](https://twitter.com/Y2019travel)



FINISH LINE AREA

Closed 18.09.2019
to 01.10.2019

RAGLAN STREET &
ALBERT STREET

Access to Parliament
Street via Albert Street

One way System in Operation

TOWER STREET &
BELFORD ROAD

Two Way Traffic
Local Access Only

BEECH GROVE

Managed Resident
Access Only

WEST PARK

Managed Access Only

HARROGATE TOWN CENTRE ROAD CLOSURES

TUESDAY 24 SEPT 2019

KEY

2 way traffic 18 September to 1 October
1 way traffic 18 September to 1 October



Timings Subject to change dependent on race speed / crowd levels and traffic levels.
For more information go to yorkshire2019.co.uk or follow our dedicated travel twitter [@Y2019travel](https://twitter.com/Y2019travel)

RIPON ROAD SECTOR

Closed 0830-1815

See circuit Map for vehicle crossing Point info

CHELtenham PARADE &
LOWER KINGS ROAD AREA

Closed 0930-1230
Closed 1400-1700

MAIN SHOPPING AREA

No Vehicle Access
0900-1900

RACE AREAS &
TEAM PARKING

Closed 0700-1900

RAGLAN STREET &
ALBERT STREET

Closed 0930-1230
Closed 1400-1700

TOWER STREET &
BELFORD ROAD

Local Access Only
Closed 0930-1145
Closed 1230-1640

FINISH LINE AREA

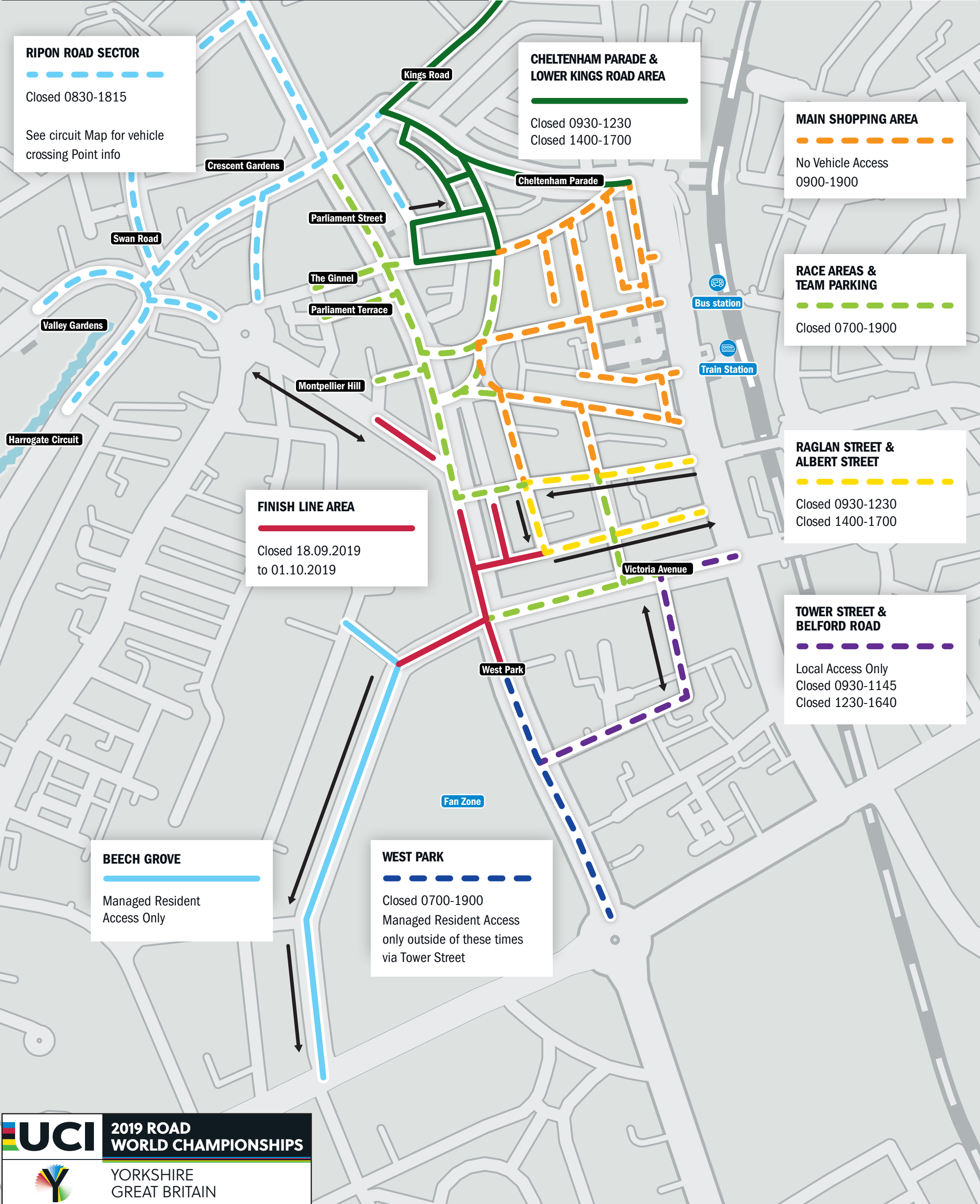
Closed 18.09.2019
to 01.10.2019

BEECH GROVE

Managed Resident
Access Only

WEST PARK

Closed 0700-1900
Managed Resident Access
only outside of these times
via Tower Street



HARROGATE TOWN CENTRE CLOSURES & TRAFFIC MGMT

1900 TUESDAY 24 TO 0700
WEDNESDAY 25 SEPT' 2019

KEY

2 way traffic 18 September to 1 October
1 way traffic 18 September to 1 October



Timings Subject to change dependent on race speed / crowd levels and traffic levels.
For more information go to yorkshire2019.co.uk or follow our dedicated travel twitter [@Y2019travel](https://twitter.com/Y2019travel)

