



# Foreword - by Sally Haigh

I was thrilled to be asked to open this year's Feast. As a previous Feast committee member, I have spent many years introducing the Guest opener, guiding the opener through the task of judging the Fancy Dress competition and being assistant in the crowning of the Feast Queen.

Being on the Feast committee can be very exacting and tiring whilst wearing many hats, but it is also very enjoyable and rewarding to see the children taking part and excelling in the indoor competitions and sports in the anticipation of winning prizes and possibly one of the cups. It is also a joy to see the pride and joy of parents, grandparents, relatives, friends and new residents as they come together to participate in the events, entertainments and refreshments. All this takes the time and hard work of the Feast committee and the willing volunteers, and to keep it going new blood is always welcome so the Feast can continue year after year.

So, I wish the Hampsthwaite Feast of 2022 all the best for another successful year.

Sally Haigh



During our Butty and Brew Breakfast on Sunday 8<sup>th</sup> May we made the draw for our Feast Queen and attendants, streamed live around the world, well Colorado at least, via our facebook page.

It gives us great pleasure to announce

**Sienna Colley**

as our 2022 Feast Queen  
and her attendants

Carmen Leyland, Adam Verity,  
Connie Clare and Noah Meads.



Your 2019 Feast Queen, Izzy Downes and  
her Attendants Martha Verity, Harry Ashton,  
Lola Shuffe & Noah Wickenden.

# Welcome



'Yikes' It's that time of year again, this year's Feast and Show are fast approaching!

'Feast' patrol are on a roll! we have been working hard behind the scenes to bring you 'Hampsthwaite FEAST & SHOW 2022'!

A few changes have been made this year, with the fun beginning on Friday evening! The children's races are up first; running races, obstacle races and perhaps even a parents race or two! Come along and sign up at 4:30pm, with races starting at 5pm. There's 'Teens vs. Adults' football, food, a family disco (with some good old disco classics to get everyone dancing) 'tattoos', tuck shop Hampsthwaite School PTA will be serving Hotdogs and Cozy P will be serving Pizzas and of course the bar will be open too.

'Yaba daba doo!' Saturday is jam packed, beginning with the Pet show, 'just for fun' dog agility/tricks competition and the new, improved Hampsthwaite run in the morning.

Our traditional Feast fancy dress parade is back but at the new time of 12:15, accompanied by Tewit Youth Band. Don't forget the theme is 'Children's TV - past and present', and nobody is too old to dress up! The Hampsthwaite Feast show, Artisan craft market, Dog Obedience demonstration, craft making for children and WI teas will begin at the memorial hall at 1pm.

Events will continue on the Feast Field from 3pm, with activities for all, including Brimham Rocks petting farm, bouncy castles, a special visit from some well known TV vehicles, climbing wall and even an inflatable laser quest!

Cowabunga! There's more to come yet! The entertainment continues into the evening with the ever popular live band 'TICKET 415', Ed Marshall as DJ, Cozy P pizza and Tancred Farm Shop providing food and of course the bar will be open all evening too! All followed by our fantastic firework finale!!

Don't miss out, keep your fingers crossed for good weather and come and join us!!!  
It'll be a blast!

'That's all folks'



# Feast Health & Safety Statement

1. We want you to enjoy yourselves, but we also want you all to be safe. We would remind you that your children are your responsibility so please remember to supervise them at all times.

2. Traffic No Waiting Cones are placed in locations to assist the emergency services to, if required, gain access to the Feast Field and the Memorial Hall as well as keeping the main road clear. Please respect these and remember to keep residents driveways and the bus route through the village free from obstruction.

3. The Feast Queen Parade takes place on public roads and parents are reminded that vehicles, including vintage tractors, take part. The parade is marshalled by the Feast Crew, who can be identified by their purple or HI Vis tops, so please follow their instructions at all times to ensure everybody's safety.

*All children under the age of 11 years, taking part in the parade or any Feast activity, MUST be accompanied by a responsible adult.*

4. Should the emergency services need to pass through the village during the parade, please move to the left, off the road and onto the footpath, until the vehicle has passed and the Marshalls indicate it is safe to continue.

Have a great time and enjoy yourselves.



## FEAST FUNDRAISING PROJECTS

### Hampsthwaite Feast Cider Project

We hope to be able to press some cider this year. Donate your apples in return get free Cider or Juice

### Community Big Breakfast

we hope to be back with our 'Free' community big breakfast in January  
We'll let you know a date for your diary soon



### HAMPSTHWAITE PICTURE HOUSE

Join us for our Cinema Club which runs monthly at the Memorial Hall  
September to April

This seasons showings to be announced shortly see hall notice board or our facebook page







THE  
**CURIOUS COW**  
OF HARROGATE

Nestled on the outskirts of the beautiful town of Harrogate, you'll find your new local pub; The Curious Cow of Harrogate.

Our ethos is pretty simple; we're all about being excellent in everything we do from the fresh food carefully crafted by our chefs to the expertly made drinks poured at the bar. We'll have an array of seasonal dishes available 7 days a week but at the heart of our offering is our steaks, hand-stretched pizzas and Sunday Roasts.



The Curious Cow, Killinghall, HG3 2AP  
01423 567035  
[www.thecuriouscowofharrogate.com](http://www.thecuriouscowofharrogate.com)

**Daleside**  
NURSERIES LTD

**Growers and Retailers of  
Quality Plants Since 1958**



Clematis – Climbers – Conifers  
Fruit Trees – Hydrangeas – Japanese Maples  
Hardy Perennials – Roses – Shrubs  
Summer Bedding – Sweet Peas – Trees

Daleside Nurseries Ltd  
Killinghall, Harrogate  
North Yorkshire, HG3 2AY  
TEL: 01423 506450  
[www.dalesidenurseries.co.uk](http://www.dalesidenurseries.co.uk)

# PET FOOD

**Poultry & Wild Bird Specialists  
Smallholder Supplies**



**The area's most comprehensive  
Selection of Wild Bird Products.**

**Compost, Manure, Topsoil, Decorative  
Bark, Stones & Gravel Now In Stock**

**Telephone 01423 506615  
[www.pharmalltd.co.uk](http://www.pharmalltd.co.uk)**

**Unit A, Moorlands Farm, Otley Rd,  
Killinghall, Harrogate, HG3 2AS**  
(Just off A59 roundabout by the Curious Cow)



Find us on  
**facebook**

**Opening Hours**  
Monday - Saturday  
9am - 5pm  
Sundays & Bank Holidays  
10am - 4pm

# Leo Dawson & Co

## Professional sewage treatment plant engineers

The people to rely on for;

Sewage plant maintenance

Sewage plant and septic tank emptying

Cesspool emptying

Drain jetting services

Domestic and commercial work



01423 528951

Levens Hall Park, Lund Lane,  
Killinghall, Harrogate  
[www.leodawson.co.uk](http://www.leodawson.co.uk)



All leading makes of  
mowers supplied  
and serviced

\*Sales  
\*Parts  
\*Service

**M P Machinery**

Unit 1 & 2 Stumps Yard, Stumps Lane, Darley  
Harrogate, North Yorkshire, HG3 2RR  
Tel: 01423 780260



## Mike Wilson Motors

The first port of call for all of  
your vehicle requirements

Bodyshop MOT Servicing



Mike Wilson Motors

Unit 6, Levens Hall Park, Lund Lane, Killinghall  
Harrogate, North Yorkshire, HG3 2BG

T: 01423 536353

E: [repairs@mikewilsonmotors.co.uk](mailto:repairs@mikewilsonmotors.co.uk)

W: [www.mikewilsonmotors.co.uk](http://www.mikewilsonmotors.co.uk)

Open Mon-Fri 8 - 6pm Sat 9 - 12pm

# Zero Waste To Landfill

Following the success of last year's Festival Event and our campaign to go single use plastic free we are now extending this to all our future Feast Events.

## Single use plastics

All our supporters are on board and will not be using single use plastics during our event. We are working with Harrogate Borough Council and have the loan of waste bins allowing us to separate all the waste created and ensure that it doesn't end up in land fill.

The bins will be clearly labelled to make sure that the right waste goes in the right bin. Your help will be greatly appreciated."

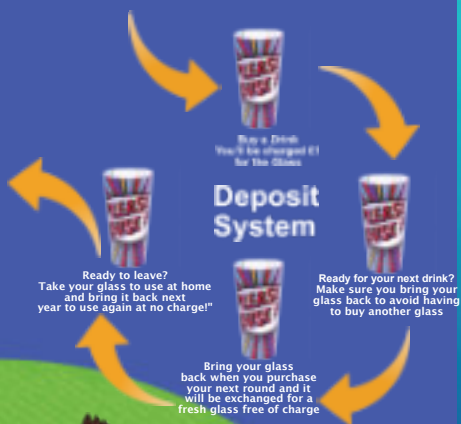
## Feast Bar – Reusable Glasses

We are grateful to Northern Energy for their sponsorship and Cllr Michael Harrison for providing a grant to allow us to provide reusable glasses for our Feast Bar.

The first time you buy a drink from the bar you will be charged £1.00 per glass.

Ready for your next drink?  
Bring your glass back when you purchase your next round and it will be exchanged for a fresh glass free of charge

Ready to leave?  
Take your glass to use at home and bring it back next year to use again at no charge!





# THE JOINERS ARMS

High Street Hampsthwaite HG3 2EU 01423 771673

A warm welcome awaits  
A Family friendly pub  
Dogs & Walkers welcome  
Traditional home cooked food  
Delicious Carvery on Sundays  
Large beer garden at the rear

## Opening hours:

Mon - Tue: Closed  
Wed - Fri: 16:30 - 23:00  
Sat: 12:00 - 23:00  
Sun: 12:00 - 22:30

## Food Service Hours

Mon - Tue: Closed  
Wed - Fri: 17:00 - 20:30  
Sat: 12:00 - 15:00  
17:00 - 20:30  
Sun: 12.00 - 17.00



Carvery Every Sunday



Weekly



Great Beer Everyday

Enjoy 15% off  
Food every  
Wednesday and  
Thursday

Becky and Tony extend a warm welcome and invite everyone to join them for their post Feast party. Saturday 23rd July - 10.00pm until late

See you there!

## FOREST HOUSE VETERINARY SURGERY

An RCVS accredited veterinary practice

Providing care for cats, dogs, small  
pets, horses and farms throughout  
Knaresborough,  
Harrogate, Ripon and Wetherby.



29 York Pl, Knaresborough HG5 0AD  
(01423) 862121  
office@fhvets.co.uk  
www.fhvets.co.uk



When you're designing your smart home, you want it to shine. Our **SHINE** plan encompasses the most important aspects of home integration!

Scan the QR code to visit our website and complete our **SHINE** questionnaire.



info@r-is.co.uk www.r-is.co.uk 01423 740910





# THE HAMPSTHWAITE RUN



Relaunched  
For 2022

We are excited to bring you a new format for our cross country run for 2022.

Our new format is a 5K run which takes you across beautiful countryside right on our door step.

We have 8 Trophy prizes

and Random spot prizes, so you don't have to be first to win

Saturday 23<sup>rd</sup> July - Race starts 10.30am  
Feast Field, Hampsthwaite

You need to register to race. Maximum 100 places  
Entry £3.00 villagers rate, £6.00 rest of the world.

Registration at [www.racebest.com/races/fayky](http://www.racebest.com/races/fayky)

Kindly Sponsored by



## Sophie's

Coffee Shop, Bed & Breakfast and Pizzeria

### Coffee Shop

Our coffee shop's experienced team takes pride in looking after each and every customer. Every cup of coffee is made to suit each person, served with recipes that have been handed down over the years within the family



### Pizza Nights

We will continue to run our successful monthly Pizza nights. We're open for dine in or take away from 5.30pm, last orders 8.45pm. For our upcoming dates and menu's visit our facebook page

### Bed & Breakfast

We have two en-suite rooms located above the coffee shop as well as a shepherd's hut down at the end of the garden. All the rooms are furnished in a calming style and offer ensuite facilities to give you a good nights sleep



Lovell House, The High Street, Hampsthwaite, North Yorkshire, YO3 2ET  
[www.sophiesbedandbreakfast.co.uk](http://www.sophiesbedandbreakfast.co.uk) tel: 01423 779219

# Children's Races

For 2022 we are bringing the children's races back to Friday night, register from 4.30pm races start at 5.00pm

The Children will be grouped into the following groups for their races

Each group will run the following races:

Reception  
Year 1/2

Year 3/4  
Year 5/6

Running girls  
Obstacle girls

Running boys  
Obstacle boys



## QUIZ TIME!

Two Quizzes this year:

- 1) Children's TV past & present.
- 2) Royalty during the Queen's 70yr reign.

Both will be available from the shop in July.  
Prizes for the winner (drawn if tied).



£1 for one quiz  
£1.50 for both

Friday night: Children's races, sweet shop, 'tattoo' stall & hot dogs provided in association with:

HAMPSTHWAITE  
SCHOOL PTA



We always need new helpers - so if you'd like to join our small, friendly team check out our facebook page for details!!

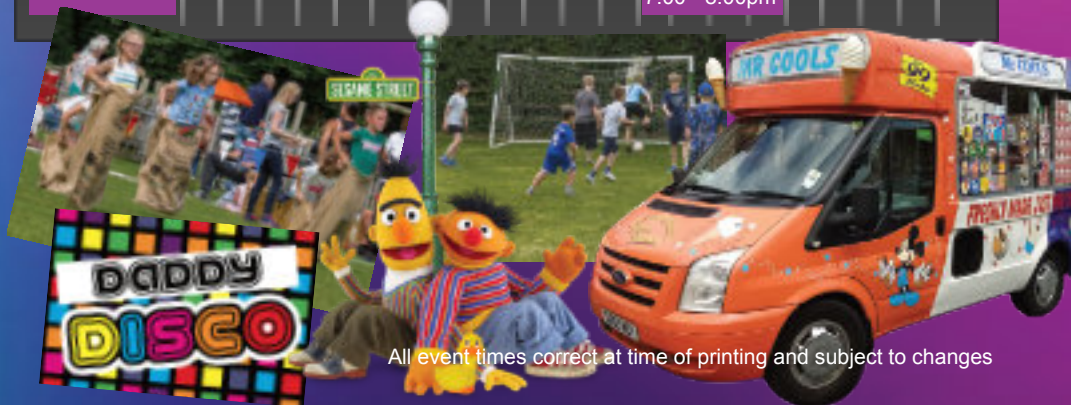
# WHAT'S ON GUIDE

# FRIDAY NIGHT



	4.00pm	4.30pm	5.00pm	5.30pm	6.00pm	6.30pm	7.00pm	7.30pm	8.00pm	8.30pm	9.00pm
Main Arena					Children's Races 5.00 - 6.00pm	Teens v's Adults Football 6.00 - 8.00pm					
Main Stage							Family Friendly Disco 6.30 - 8.30pm				
Food						PTA Hotdogs 6.00 - 6.30pm					
						Cozy P Pizzas 6.00 - 9.00pm					
Treats					Mr Cools - Ice Cream 4.30 - 5.00pm						
Treats					Sweet Stall 4.30 - 7.00pm						
Bar					Feast Bar 4.30 - 9.00pm						
Memorial Hall										Open for Show Entries 7.00 - 8.00pm	

Due to the licensing terms of this event please do not bring your own alcohol on to the field



All event times correct at time of printing and subject to changes



# THE PET SHOW

Our Pet show is for our under 16's to bring along their pet for best in show judging.

Feast Saturday at 10.15am  
on the Memorial Hall Lawn



Classes:  
Small dog (Under 30cm)  
Large (Over 30cm)  
Cats  
Other Pets  
and Unusual pets

## Feast Grand Parade

New for 2022 we have a new route and new start time

The Children's TV themed Fancy Dress parade will leave Brookfield Green at 12.30pm so please meet at 12.15pm.

The first route change is that we will leave Brookfield via the new estate.

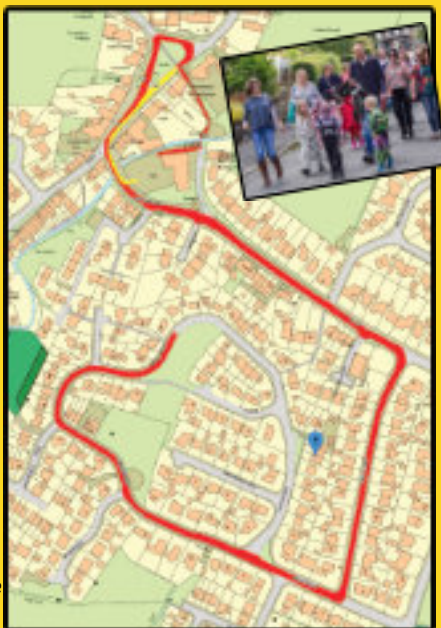
We will then make our way along Brookfield, turning down Dale Close and along Hollins Lane.

We will then Turn Right at The Joiners towards the Village Green. Anyone wishing to leave the parade at the memorial hall as we pass is welcome to do so.

Our second change is that the pedestrian parade will turn up the side of the school and over the pack horse bridge to the Memorial Hall.



\*For safety any child/ren under 11 years of age joining the parade must be accompanied by an adult





# WHAT'S ON GUIDE

## SATURDAY MORNING

	8.30am	9.00am	9.30am	10.00am	10.30am	11.00am	11.30am	12.00noon	12.30pm	1.00pm	1.30pm
Memorial Hall					Open for Show entries 9.00 - 10.30am	Closed for Judging					
Memorial Hall Car Park						Pet Show & Dog Agility & Tricks 10.15 - 11.15am				Feast Opening 1.00pm	
Feast Field					The Hampsthwaite Run Meet at 10.15am						
The Church						Bell Ringers Peal 11.00 - 11.45					
Brookfield Green										Feast Grand Parade 12.15pm	



### THE HAMPSTHWAITE RUN



All event times correct at time of printing and subject to changes

# DOGS BEHAVING BADLY!

Does your dog know any tricks?  
Enter our 'just for FUN' competition!



Can they jump?  
Try the hurdle competition  
10:30am Hampsthwaite  
Memorial hall Car Park.

Spot prizes and All entrants will be  
entered in to a prize draw for the chance  
to win a free 45 minute training session.

Organised by:



## 2PM - LIVE OBEDIENCE DEMO FROM BOWLAND K9 DOG TRAINING

\* Open to dogs over 12 months only. Children must be accompanied by an adult. Involves 3 hurdles/stay command. Pre-event practice session (not compulsory) to be held in July - watch FB for details!



## theWI INSPIRING WOMEN Hampsthwaite WI

meets at 7.30pm on the first  
Monday of each month in  
Hampsthwaite Memorial Hall

Come along and join our  
friendly group to find out  
about the WI or contact  
01423770524

The Hampsthwaite WI will  
be serving refreshments at  
the Feast and the Show  
Hope to see you there

## Mr Cools Creamy Ices of Harrogate

Mr Cools creamy ices of  
Harrogate, is a small family  
run business. Established for  
over 15 years.

We now have two ice cream  
vans and a vast range of ice  
cream.

We cater for events,  
galas, village fates,  
weddings and parties  
big or small.

If you would like to book  
us for your special  
occasion call Shaun on  
07949145397 or email  
nutfynat2005@gmail.com



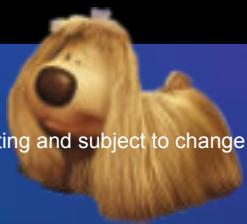
# WHAT'S ON GUIDE

## SATURDAY AFTERNOON



1.00pm 1.30pm 2.00pm 2.30pm 3.00pm 3.30pm 4.00pm 4.30pm 5.00pm 5.30pm

Memorial Hall		Hall Open for Viewings 1.30 - 3.15pm	Collection of prize money & exhibits 3.15 - 4pm																							
Memorial Hall Car Park	Fancy-dress Judging 1.00pm	Tombola, Tewit Youth Band, Artisan Craft Stalls, Children's Craft Workshop and Dog Obedience Demo at 2pm 1.30pm																								
Memorial Hall Food		WI Teas 1.30 - 3.30pm																								
Memorial Hall Treats		Mr Cools - Ice Cream and Sweet Stall 1.00 - 3.00pm (Then Feast Field)																								
Feast Bar (Feast Field)	Feast Bar 2.00pm - 10.30pm																									
Feast Field (Feast Field)	<table><tr><td>Bouncy Castle</td><td>from 3.00pm</td></tr><tr><td>Brimham Rocks Mobile Farm</td><td>3.00 - 6.00pm</td></tr><tr><td>Cards - Higher/Lower from</td><td>from 3.00pm</td></tr><tr><td>Climbing Wall</td><td>from 3.00pm</td></tr><tr><td>Face painting</td><td>from 3.00pm</td></tr><tr><td>Hair Braiding</td><td>from 3.00pm</td></tr><tr><td>Inflatable Laser Quest Game</td><td>4.00 - 8.00pm</td></tr><tr><td>Inflatable Obstacle Course</td><td>from 3.00pm</td></tr><tr><td>Brownies &amp; Guides-Lob a Choc</td><td>from 3.00pm</td></tr><tr><td>Penalty Shoot Out</td><td>from 3.00pm</td></tr><tr><td>Tattoos</td><td>from 3.00pm</td></tr><tr><td>Themed Cars</td><td>from 3.00pm</td></tr></table>			Bouncy Castle	from 3.00pm	Brimham Rocks Mobile Farm	3.00 - 6.00pm	Cards - Higher/Lower from	from 3.00pm	Climbing Wall	from 3.00pm	Face painting	from 3.00pm	Hair Braiding	from 3.00pm	Inflatable Laser Quest Game	4.00 - 8.00pm	Inflatable Obstacle Course	from 3.00pm	Brownies & Guides-Lob a Choc	from 3.00pm	Penalty Shoot Out	from 3.00pm	Tattoos	from 3.00pm	Themed Cars
Bouncy Castle	from 3.00pm																									
Brimham Rocks Mobile Farm	3.00 - 6.00pm																									
Cards - Higher/Lower from	from 3.00pm																									
Climbing Wall	from 3.00pm																									
Face painting	from 3.00pm																									
Hair Braiding	from 3.00pm																									
Inflatable Laser Quest Game	4.00 - 8.00pm																									
Inflatable Obstacle Course	from 3.00pm																									
Brownies & Guides-Lob a Choc	from 3.00pm																									
Penalty Shoot Out	from 3.00pm																									
Tattoos	from 3.00pm																									
Themed Cars	from 3.00pm																									



All event times correct at time of printing and subject to change



# THE QUEENS HEAD INN

Kettleasing, Harrogate,  
North Yorkshire, HG3 2LB  
Tel: 01423 770263  
[www.queensheadkettleasing.co.uk](http://www.queensheadkettleasing.co.uk)

Glen and Louise are proud to be the  
Official Feast Bar for 2022.  
Serving Friday afternoon and all day  
Saturday.

A warm welcome awaits customers at  
The Queens Head Inn – a traditional country inn  
serving good home cooked food, well kept local  
real ales and comfortable B&B rooms.



## OFF YOUR BILL

When presenting  
this advert at the  
pub before  
31st August 2022



## COZY P'S WOOD-FIRED PIZZA

We're excited to be  
serving our Wood  
Fired Pizzas at  
Hampsthwaite  
'Feastival' 2022

Speak to us about hiring us  
For your next event...

07387 798857  
[cozypswoodfiredpizza@gmail.com](mailto:cozypswoodfiredpizza@gmail.com)



## Serving Hog Roast at Hampsthwaite Feastival

Tancred Farm Shop,  
Whixley, York, YO26 8BA

01423 330764

[www.tancredfarmshop.co.uk](http://www.tancredfarmshop.co.uk)

Open 7 days a week  
8am - 6pm





**WHAT'S  
ON  
GUIDE**

# SATURDAY NIGHT

5.30pm   6.00pm   6.30pm   7.00pm   7.30pm   8.00pm   8.30pm   9.00pm   9.30pm   10.00pm   10.30pm

**Main Stage**  
(Feast Field)

Prize Giving  
Feast and  
Show

5.30 -6.00pm

Participation  
Event

6.00 -7.00pm

Ed  
Marshall  
DJ

7.00 -7.45pm

Ticket  
415

7.45 -8.30pm

Ed  
Marshall  
DJ

8.30-9.15pm

Ticket  
415

9.15 -10.00pm

Feast  
Fireworks

10.15pm

**Food**  
(Feast Field)

**CosyP's Pizza**

5.00 - 9.00pm

**Tancred Farm Hog Roast**

5.00 - 9.00pm

Our Feast  
Fireworks are  
professionally  
arranged by  
Harrogate  
Fireworks

**Treats**  
(Feast Field)

**Mr Cools - Ice Cream**

3.00pm onwards

**Feast Bar**

**Feast Bar**

2.00pm - 10.30pm

Due to the licensing  
terms of this event please  
do not bring your own  
alcohol on to the field

**Feast Field**

Bouncy Castle

BRMF

Cards - Higher/Lower

Climbing Wall

Face painting

Hair Braiding

Inflatable Laser Quest Game

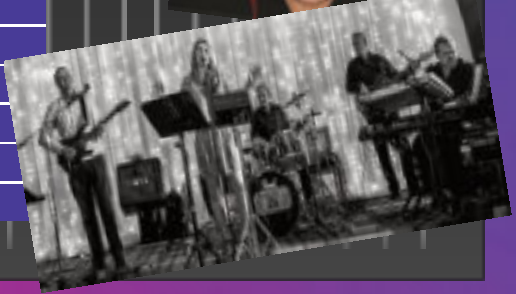
Inflatable Obstacle Course

Lob a Choc

Penalty Shoot Out

Tattoos

Themed Cars



All event times correct at time of printing and subject to change

DESIGN - MANUFACTURE - INSTALL - COMMISSION

With over 21 years experiences ILS are specialists in designing, manufacturing and installing a comprehensive range of fume cupboards and ventilated products

Unit 2 ( The Ivy )  
New York Industrial Estate  
Summerbridge  
North Yorkshire  
HG3 4LA  
01423 781101  
sales@fumecupboards-direct.com  
www.fumecupboards-direct.com



## Sophie's CORNER SHOP

• OPEN 7 DAYS A WEEK •

### Freshly Made Food

Our convenience store sells fresh cakes and coffees, as well as goodies from Sophie's homemade range.

### Products For All Your Needs

Newspapers, Lottery tickets, tobacco, alcohol, fresh bread and just about everything else you can think of

Sophie's Corner Shop  
Nº 1 High Street, Hampsthwaite, HG3 2EZ  
tel: 01423 779006  
Monday - Friday: 7.30am- 8pm  
Saturday: 7.30am- 7pm & Sunday: 8am- 5pm

THIS AUTUMN....

THE HAMPSTHWAITHE PLAYERS  
PRESENT:

**THE  
SNOW  
QUEEN**

PANTOMIME

23RD - 26TH NOVEMBER 2022

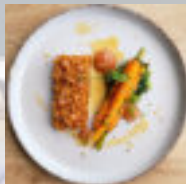
WE ARE A FRIENDLY BUNCH  
ALWAYS LOOKING FOR  
NEW MEMBERS.  
IF YOU ARE INTERESTED  
IN JOINING US PLEASE CHECK OUT  
OUR FACEBOOK PAGE FOR DETAILS

f THEHAMPSTHWAITHEPLAYERS





The Terrace at Hollins Hall has recently been fully refurbished and is open to residents and the public.



Opening times  
 Mon-Thursday 9am - 5pm  
 Friday Saturday 9am-11pm  
 Sunday 10am -5pm food served until 4pm

Booking and Enquires 01423 623533  
[www.hollinshallharrogate.co.uk/bar-restaurant](http://www.hollinshallharrogate.co.uk/bar-restaurant)  
 Hollins Hall, Lund Lane, Killinghall, North Yorkshire

**25% off**

Food when you  
 present this advert  
 before 31<sup>st</sup> August  
 2022



**Stephenson**  
 Control Systems

Are market leaders in the  
 design and manufacture of  
 electrical control panels  
 and control systems for all  
 business sectors

Stephenson House  
 Lund Lane, Killinghall  
 Harrogate, HG3 2BW  
 01423 524341  
[admin@stephensoncontrol.com](mailto:admin@stephensoncontrol.com)  
[www.stephensoncontrol.com](http://www.stephensoncontrol.com)



**Moorlands Garage Ltd are please to  
 be able to provide all your vehicle  
 servicing needs.**

**We can help with**

**MOTs • Servicing • Repairs • Tyres**

**Moorlands Garage,  
 Otley Road,  
 Killinghall,  
 Harrogate,  
 HG3 2AS  
 01423 525853**



# HAMPSTHWAITE SHOW



**The Feast Show** will be held in the Memorial Hall on Saturday 23rd July at 1.30 p.m. Admission to the Show is free. **Tombola** and **WI Refreshments** from 1.30 p.m.

Entries to be made in the Memorial Hall between 7.00 p.m. and 8.00 p.m. on Friday 22nd July or between 9.00 a.m. and 10.30 a.m. on Saturday 23rd July. Exhibits to be staged by 10.30 a.m. on Saturday and left in place with any prize cards awarded until 3.15 p.m. Show prizes can be collected from 3.15 p.m. Trophies awarded at 5:30 p.m. on the Feast Field.

Please see reverse of the Show Entry Form for further information.

.....

## SHOW SCHEDULE 2022

### **Best Kept Front Garden** (no entry or fee required)

Promoted and judged by the Hampsthwaite Village Society which will award **The George Wainwright Trophy** to the winner.

### **ENTRY FEE - all Adult Classes (Children entries free)**

30p per class on Friday 22nd July  
50p per class on Saturday 23rd July

### **PRIZE MONEY**

1st £2.00

2nd £1.50

3rd £1.00





## CHILDREN'S SECTION

Open to all children attending Hampsthwaite School or living within the Brochure delivery area.

### Nursery and Reception

- 190 A TV theme colouring page
- 191 4 Floating flower heads in a saucer
- 192 A paper plate mask of a TV character



### Years 1 & 2 only

- 201 A recycling model of a TV character
- 202 Flowers in a jam jar
- 203 Write a poem describing your favourite TV show/character

### Years 3 & 4 only

- 211 Draw a poster of a new children's TV character/show
- 212 Bake a biscuit
- 213 Write a short scene/dialogue between two TV characters

### Years 5 & 6 only

- 221 Draw a comic strip design/screen play for a new TV show
- 222 Decorate a cupcake
- 223 Write a review of your favourite TV show

### Open to all children

- 231 Highest yield from a potato, still growing in a builder's bucket, bag for life or similar container
- 232 Tallest Beanstalk still in a pot and left to grow naturally round a cane(s)
- 233 Tallest Sunflower still growing in its pot (not necessarily flowering)

The winner of most points in the Children's section will receive **The Gordon & Isabell Bailey Cup** and the best exhibit in the Children's section will receive **The Thompson Trophy**

## YOUTH SECTION - Year 7 to Year 11

- 251 4 decorated cake pops
- 252 Any item to demonstrate your design and technology skills
- 253 A painting (any media) or a drawing (pen and/or ink)
- 254 A photograph (can be digitally enhanced, printed on any material, any size)

### ROSE SECTION

- 301 2 Specimen roses
- 302 Stem of any rose - judged for fragrance
- 303 Sprays of Floribunda Roses
- 304 A bowl of roses

The winner of class 301 will receive **The Greenwood Rose Bowl** and the overall winner with the most points in this Section will receive **The Joe Wright Trophy**

### FLOWER SECTION

- |   |  |
|---|--|
| <ul style="list-style-type: none"> <li>351 Vase of sweet peas (annuals, 6 stems)</li> <li>352 Vase of cut flowers (7 stems)</li> <li>353 Orchid in a pot</li> <li>354 5 Hosta leaves in a vase</li> </ul> | <ul style="list-style-type: none"> <li>355 Vase of 3 flowering shrub stems</li> <li>356 Vase of herb</li> <li>357 4 Flower heads (same variety)</li> <li>358 Foliage plant in a pot</li> <li>359 Flowering plant in a pot</li> </ul> |
|---|--|

The winner of the most points in the Flower section will receive **The Arthur Bowers Cup**

### VEGETABLE SECTION

- |   |   |
|---|---|
| <ul style="list-style-type: none"> <li>401 4 White potatoes (washed)</li> <li>402 4 Coloured potatoes (washed)</li> <li>403 4 Pods of peas</li> <li>404 2 Courgettes</li> <li>405 3 Onions with tops</li> <li>406 6 Spring onions</li> <li>407 4 Broad beans</li> <li>408 3 Beetroot</li> </ul> | <ul style="list-style-type: none"> <li>409 1 Lettuce</li> <li>410 4 Tomatoes</li> <li>411 1 Cabbage</li> <li>412 4 Shallots</li> <li>413 1 Cucumber</li> <li>414 3 types of vegetables (Quantity according to 401 to 413)</li> <li>415 Any other vegetable</li> </ul> |
|---|---|

The winner of the most points in the Vegetable section will receive **The Flather Trophy**

### SOFT FRUIT SECTION

- |  |   |
|--|---|
| <ul style="list-style-type: none"> <li>451 6 Gooseberries with leaves</li> <li>452 6 Raspberries with stalks</li> <li>453 6 Blackcurrants with leaves</li> </ul> | <ul style="list-style-type: none"> <li>454 6 Strawberries</li> <li>455 6 Mixed fruits (2 of each of any 3 varieties)</li> </ul> |
|--|---|

### PRODUCE SECTION

- |   |   |
|---|---|
| <ul style="list-style-type: none"> <li>501 4 hen eggs (White or Brown in shell)</li> <li>502 A sourdough loaf</li> <li>503 4 Millionaires shortbread</li> <li>504 4 chocolate brownies</li> </ul> | <ul style="list-style-type: none"> <li>505 4 pieces of flapjack</li> <li>506 6 Currant Shrewsbury biscuits</li> <li>507 2 fruit scones</li> <li>508 A cake containing vegetables</li> </ul> |
|---|---|

The winner of the most points in the Produce section will receive **The B. H. Pugh Cup**



## PRESERVES SECTION

- |  |  |
|--|--|
| 551 A jar of Blackcurrant Jam<br>552 A jar of marmalade (any variety)<br>553 A jar of fruit curd (any variety) | 554 A jar of chutney (any variety)<br>555 Non-alcoholic drink from hedgerow<br>556 Alcoholic any fruit liqueur |
|--|--|

No advertising on lids is permitted, all jars must be labelled with variety & dated.

**For 2023:** The jam will be Gooseberry Jam

## HANDICRAFT SECTION


- |   |  |
|---|--|
| 601 An item of crochet<br>602 A hand-knitted item<br>603 Make a homemade Toy<br>604 An item of bead jewellery | 605 A handmade greeting card<br>606 An item made from any hard material<br>607 A sewing machine made article<br>608 Any other item of handicraft |
|---|--|

**The Barbara Curry Memorial Trophy** will be awarded for the best item of handicraft

## ART SECTION

- |   |  |
|---|--|
| 651 An oil or acrylic painting<br>652 A water colour<br>653 Mixed media | 654 A Still Life<br>655 A painting on a household object |
|---|--|

## FLOWER ARRANGING SECTION

- |   |  |
|---|--|
| 701 An arrangement in a milk jug<br>702 An arrangement in a decorated tin can<br>703 A table centre piece, accessories allowed (open class) |  |
|---|--|

**NOTE:** 'arrangement' is a placement of any plant material in one container with or without a base.

**The Palmer Challenge Trophy** - awarded for the most points in the Flower Arranging Section. **The Ellis Cup** - awarded for the best Floral Arrangement

## PHOTOGRAPHIC SECTION

- |                                 |  |
|---------------------------------|--|
| 751 Windows<br>752 A silhouette | 753 My best friend<br>754 Rural Events |
|---------------------------------|--|

**NOTE:** Please use photographic paper. Maximum size of photos 7" x 5" Unframed

The winner of the most points in classes 751 to 754 will receive

**The Graham Barker Memorial Trophy** and **The Robert & Anne Bowhill Plate** will be awarded to the 'Best Photograph in Show'

**For 2023:** the photographic classes will be:

- |                           |            |                   |               |
|---------------------------|------------|-------------------|---------------|
| 751 Jubilee Celebrations, | 752 Gates, | 753 Village Life, | 754 Bird Life |
|---------------------------|------------|-------------------|---------------|

**The Hampsthwaite W.I. Buckley Cup**  
will be awarded to the W.I. Member gaining the most points in the Show



# Scarecrow Competition 2022

Join in and display your  
Scarecrows by Sunday 3<sup>rd</sup> July

Theme:

Children's Tv past and Present

Register your Scarecrow at  
<https://tinyurl.com/HFScarecrows>

## Scarecrow Trail

available from Friday 8<sup>th</sup> July  
from the Corner Shop



90 years of  
great service  
18,000+ happy  
customers



Get a quote today and join them

Oil 01423 770 666 | LPG 01423 772 789

Visit [northernenergy.co.uk](https://northernenergy.co.uk)

