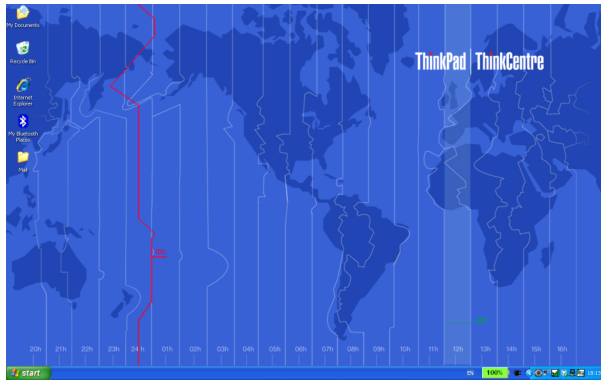
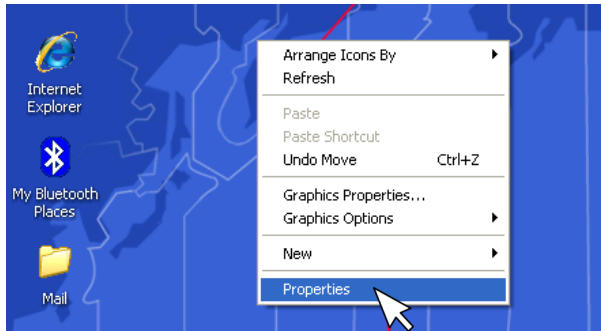


Hampsthwaite Online : enlarging icons and labels



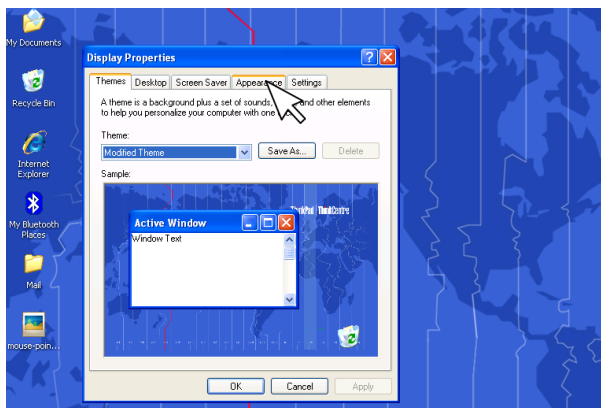
The DeskTop (Windows XP)

- This is set by the main '*engine room*' of the computer - i.e. its **Operating System** (e.g. Windows 7, Vista or XP)
- Position the **Pointer** somewhere on the DeskTop then click the **right hand Mouse or Touch Pad** button to show a menu of what can be changed.
- Note that here you can choose to **Arrange Icons** - e.g. automatically if you follow the arrow to the right and select this.
- Click on **Properties** to see more.



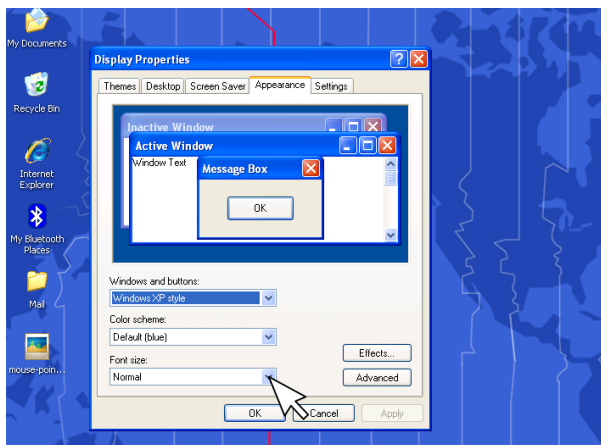
The Desk Top - Properties

- Here you can set the general appearance of the Desk Top.
- Note the various **Tabs** at the top - try clicking on them to see what they offer.
- Click on the **Appearance** Tab to see more.



The Desk Top - Appearance

- Click on the **Drop Down Arrow** to the right of the bottom **Font Size Dialogue Box**.
- Choose the size of **Font** you wish to use - i.e. *Normal*, *Large* or *Extra Large*
- Click on the **Effects Button** to see more.



The Desk Top - Effects

- If the **Use large icon** box is not ticked, you may wish to click on it to try large icons - if you don't like any of these changes you can always undo them later by following the same procedure.
- Click **OK** at the bottom of the **Effects** box
- Click **OK** at the bottom of the **Display Properties** dialogue box then wait whilst the changes are made.

